



Way of Life!

Service Bulletin

Bulletin Number: M09-03

Date: 11/03/08

Page: 1 of 11

Subject: Model & Model Year Identification

**Affected Models: 1977 - 2009 Model Year
Outboard Motors**

Read & Initial

Manager	_____
Parts	_____
Service	_____

Notice

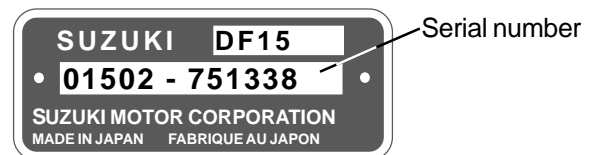
With the many changes to the various Suzuki outboard models over the years, it is imperative that the correct model and model year is determined when referring to the service specifications or when ordering parts.

Model

The serial number prefix indicated on the plate affixed to the clamp bracket is used to determine the model of outboard. The prefix is different for each type of outboard motor, even if of the same horsepower. For example, the prefix on a pre-mix 8 hp is 0801 while the prefix for an oil injected 8 hp is 00802.



and compare this number to the charts on the following pages. An exception to this system is on 1979 and earlier model year outboards. On these outboards, the first digit in the serial number is a letter. The letter "C" indicates a 1977 model year, "D" a 1978 and "F" a 1979.



Model Year

The 6 digit serial number indicated on the plate affixed to the clamp bracket is used to determine the model year of the outboard. Refer to the first 2 of 6 digits. From 1980 models, the first digit in the serial number is the same as the last digit the outboard's model year. (0 = 1980 or 1990, 1 = 1981 or 1991). To determine if the outboard is an 80s or a 90s model year, refer to the second digit in the serial number

Model Designation

The model designation describes the engine type, horsepower, standard components and model year. The model designation provides a complete description of the outboard and is useful for service or parts inquiries or when ordering new outboards through the Suzuki Canada sales department. As an example, let's have a look at the different parts of the DF50TLX model designation.

DF 50TLX The first two digits in the model designation indicate the basic engine design. The code starts with "DT" on 2-stroke cycle engines and "DF" on 4-stroke cycle engines.

DF50TLX

The next digits in the model designation indicate the horsepower. The horsepower of a motor can be determined by referring to the prefix on the plate mounted on the clamp bracket and then by referring to the charts starting on page 6. Note that the prefix also describes more detailed model design changes for each horsepower size. For example, the prefix will be 0801 for a pre-mix type 8 hp engine and 00802 for an oil injected 8 hp engine.

DF50TLX

The next digit or series of digits indicate the outboard's standard feature(s). The outboard must be inspected to determine these features. Note that the "M" is deleted from the model designation of some small motors as it is assumed that these motors are only available with manual start and tiller control.

T = Trim & tilt, remote control, electric start (tilt only with remote & electric on DT40TC prior to 1994).

R = Remote control, electric start.

M = Manual start, tiller control.

E = Electric start, tiller control.

TH = Tiller control with PTT (some DT55/65, DF60/70).

QH = Tiller control with gas assisted tilt (some DF25/30/40/50).

V = 200 HP Exante model with Comlink, PTT, oil injection, remote control.

SS = Super six (150 HP only) with PTT, oil injection, remote control. Super Sport for DF250

S = High performance 150 HP with EFI (designed for bass boats).

N = High thrust or sail model available in 8 and 9.9 hp.

C = Oil injection.

DF50TLX

The second last digit in the model designation refers to the boat transom height that the engine is designed to be installed on. Inspect the outboard to determine this code. The applicable transom height for some small motors is not indicated in the model designation as it is assumed to be short.

S = 15", L = 20", X = 25", XX = 30"

Note: "G" or "Z" letters after the transom height designation indicates counter rotation.

DF50TLX

The last letter in the model designation represents a model year. Note that the V, Q or K used in the 2 digit model year letter codes is dropped in the model designation.

Year	77	78	79	80	81	82	83	84	85	86	87	
Code	C	D	F	G	J	VZ	QD	VE	VF	VG	VH	
88	89	90	91	92	93	94	95	96	97	98	99	00
VJ	K	L	M	N	P	R	S	T	V	W	X	Y
01	02	03	04	05	06	07	08	09				
K1	K2	K3	K4	K5	K6	K7	K8	K9				

Canadian Designation

A code is used in the service specifications or parts listing to indicate when differences occur between the Canadian market and the general market. Refer to the codes below for the correct Canadian model information.

1977 ~ 1992	E-28
1993	E-01 (DT2 - 65, DT150/200/225) E-03 (DT75 - 140, DT150S)
1994 ~ 1997	E-01 (DT2 - DT40, DF9.9/15) E-03 (DT55 - DT225)
1998	E-01 (DT2.2 - DT75, DF9.9/15) E-03 (DT85 - DT225, DF60/70)
1999	E-01 (DT2.2, DT30C) E-03 (DF40/50/60/70, DT25C/85) E-11 (DT5/6/100/115S/140N6, DF9.9/25) E-13 (DT40M)
2000	E-01 (DT2.2) E-03 (All DF, DT85) E-11 (DT5/6/115S/140/150/150S/200/225) E-13 (DT30M)
2001 ~	E-03

Identification Charts

The identification charts are arranged into 2 groups. DF models are on pages pages 3 to 5 and DT models are on pages 6 to 11. The models are then arranged according to horsepower, from smallest to largest. The chart also includes the model year, year code, prefix, initial serial number and model codes of all outboards distributed by Suzuki Canada.

Model	Year	Code	Prefix	Serial #	SCI Models Distributed
DF2.5 (68 cc) (1 cyl.)	06	K6	00251F	680001	DF2.5SK6
	07	K7	00251F	780001	DF2.5SK7
	08	K8	00251F	880001	DF2.5SK8
	09	K9	00251F	980001	DF2.5SK9
DF4 (138 cc) (1 cyl.)	03	K3	00401F	371001	DF4MSK3, DF4MLK3
	04	K4	00401F	421001	DF4MSK4, DF4MLK4
	05	K5	00401F	510001	DF4MSK5, DF4MLK5
	06	K6	00401F	680001	DF4MSK6, DF4MLK6
	07	K7	00401F	780001	DF4SK7, DF4LK7
	08	K8	00401F	880001	DF4SK8, DF4LK8
	09	K9	00401F	980001	DF4SK9, DF4LK9
DF6 (138 cc) (1 cyl.)	03	K3	00601F	371001	DF6MSK3, DF6MLK3
	04	K4	00601F	421001	DF6MSK4, DF6MLK4
	05	K5	00601F	510001	DF6MSK5, DF6MLK5
	06	K6	00601F	680001	DF6MSK6, DF6MLK6
	07	K7	00601F	780001	DF6SK7, DF6LK7
	08	K8	00601F	880001	DF6SK8, DF6LK8
	09	K9	00601F	980001	DF6SK9, DF6LK9
DF9.9 (302 cc) (2 cyl.)	96	T	00991F	651001	
	97	V	00991F	751001	DF9.9MSV, DF9.9MLV, DF9.9ESV, DF9.9ELV
	98	W	00991F	861001	DF9.9MSW, DF9.9MLW, DF9.9ESW, DF9.9ELW
	99	X	00991F	971001	DF9.9MSX, DF9.9MLX, DF9.9ELX
	00	Y	00991F	031001	DF9.9MSY, DF9.9MLY, DF9.9ESY, DF9.9ELY
	01	K1	00991F	151001	DF9.9MSK1, DF9.9MLK1
	02	K2	00991F	251001	DF9.9MSK1, DF9.9MLK2 DF9.9ESK2, DF9.9ELK2
	03	K3	00991F	371001	DF9.9MSK3, DF9.9MLK3 DF9.9ESK3, DF9.9ELK3
	04	K4	00992F	421001	DF9.9MSK4, DF9.9MLK4 DF9.9ELK4, DF9.9RLK4
	05	K5	00992F	510001	DF9.9MSK5, DF9.9MLK5 DF9.9ELK5, DF9.9RLK5
	06	K6	00992F	680001	DF9.9SK6, DF9.9LK6, DF9.9ESK6, DF9.9ELK6 DF9.9RLK6
	07	K7	00992F	780001	DF9.9SK7, DF9.9LK7, DF9.9ESK7, DF9.9ELK7 DF9.9RLK7
	08	K8	00992F	880001	DF9.9SK8, DF9.9LK8, DF9.9ESK8, DF9.9ELK8, DF9.9RLK8, DF9.9THLK8, DF9.9YLK8, DF9.9TXK8
09	K9	00992F	980001	DF9.9SK9, DF9.9LK9, DF9.9ESK9, DF9.9ELK9, DF9.9RLK9, DF9.9THLK9, DF9.9THXK9, DF9.9TLK9, DF9.9TXK9	

Model	Year	Code	Prefix	Serial #	SCI Models Distributed
DF15 (302 cc) (2 cyl.)	96	T	01501F	651001	
	97	V	01501F	751001	DF15MSV, DF15MLV, DF15ESV, DF15ELV
	98	W	01501F	861001	DF15MSW, DF15MLW, DF15ESW, DF15ELW
	99	X	01501F	971001	DF15MSX, DF15MLX, DF15ESX, DF15ELX
	00	Y	01501F	031001	DF15MSY, DF15MLY, DF15ESY, DF15ELY, DF15RLY
	01	K1	01501F	151001	DF15MSK1, DF15MLK1
	02	K2	01501F	251001	DF15MSK2, DF15MLK2 DF15ESK2, DF15MLK2 DF15RLK2
	03	K3	01501F	371001	DF15MSK3, DF15MLK3 DF15ESK3, DF15ELK3 DF15RLK3
	04	K4	01502F	421001	DF15MSK4, DF15ESK4 DF15ELK4
	05	K5	01502F	510001	DF15MSK5, DF15ESK5 DF15ELK5
06	K6	01502F	680001	DF15SK6, DF15ESK6 DF15ELK6	
07	K7	01502F	780001	DF15SK7, DF15ESK7 DF15ELK7	
08	K8	01502F	880001	DF15SK8, DF15ESK8, DF15ELK8	
09	K9	01502F	980001	DF15SK9, DF15ESK9, DF15ELK9	
DF25 (538 cc) (V2 cyl.)	06	K6	02502F	680001	DF25MSK6, DF25MLK6, DF25ESK6, DF25ELK6, DF25RSK6, DF25RLK6
	07	K7	02502F	781001	DF25SK7, DF25LK7, DF25ESK7, DF25ELK7, DF25RSK7, DF25RLK7
	08	K8	02502F	880001	DF25SK8, DF25LK8, DF25ESK8, DF25ELK8, DF25RLK8
	09	K9	02502F	980001	DF25SK9, DF25LK9, DF25ESK9, DF25ELK9, DF25RLK9
	00	Y	02501F	031001	DF25MQSY, DF25MQLY, DF25 EQSY, DF25EQLY, DF25QRLY, DF25TLY
DF25 (597cc) (3 cyl.)	01	K1	02501F	151001	
	02	K2	02501F	251001	DF25MQSK2, DF25MQLK2 DF25EQSK2, DF25EQLK2 DF25TLK2
	03	K3	02501F	371001	
	04	K4	02501F	421001	DF25MQSK4, DF25MQLK4 DF25EQSK4, DF25EQLK4 DF25TLK4
	05	K5	02501F	510001	DF25MQSK5, DF25MQLK5 DF25EQSK5, DF25EQLK5 DF25TLK5
	06	K6	02501F	680001	DF25TLK6

Model	Year	Code	Prefix	Serial #	SCI Models Distributed
DF30 (597cc) (3 cyl.)	00	Y	03001F	031001	DF30MQSY, DF30MQLY DF30QRLY, DF30TLY
	01	K1	03001F	151001	
	02	K2	03001F	251001	DF30MQSK2, DF30MQLK2 DF30EQSK2, DF30EQLK2 DF30TLK2
	03	K3	03001F	371001	DF30MQSK3, DF30MQLK3 DF30EQSK3, DF30EQLK3 DF30TLK3
	04	K4	03001F	421001	DF30MQSK4, DF30MQLK4 DF30EQSK4, DF30EQLK4 DF30TLK4
	05	K5	03001F	510001	DF30MQSK5, DF30MQLK5 DF30EQSK5, DF30EQLK5 DF30TLK5
	06	K6	03001F	680001	DF30MQSK6, DF30MQLK6 DF30EQSK6, DF30EQLK6 DF30TLK6
	07	K7	03001F	780001	DF30MQSK7, DF30MQLK7 DF30EQSK7, DF30EQLK7 DF30TLK7
DF40 (815 cc) (EFI 3 cyl.)	99	X	04001F	971001	DF40TLX, DF40QHLX
	00	Y	04001F	031001	DF40QHLY, DF40TLY
	01	K1	04001F	151001	DF40TLK1
	02	K2	04001F	251001	DF40TLK2
	03	K3	04001F	371001	DF40TLK3
	04	K4	04001F	421001	DF40TLK4
	05	K5	04001F	510001	DF40TLK5
	06	K6	04001F	680001	DF40TLK6
	07	K7	04001F	780001	DF40TLK7
	08	K8	04001F	880001	DF40TLK8
09	K9	04001F	980001	DF40TLK9	
DF50 (815 cc) (EFI 3 cyl.)	99	X	05001F	971001	DF50TLX, DF50QHLX
	00	Y	05001F	031001	DF50QHLY, DF50TLY
	01	K1	05001F	151001	DF50TLK1
	02	K2	05001F	251001	DF50TLK2
	03	K3	05001F	371001	DF50TLK3
	04	K4	05001F	421001	DF50TLK4
	05	K5	05001F	510001	DF50TLK5
	06	K6	05001F	680001	DF50TLK6
	07	K7	05001F	780001	DF50TLK7
	08	K8	05001F	880001	DF50TLK8
09	K9	05001F	980001	DF50TLK9	

Model	Year	Code	Prefix	Serial #	SCI Models Distributed			
DF60 (1298 cc) (EFI 4 cyl.)	98	W	06001F	861001	DF60TLW			
	99	X	06001F	971001	DF60TLX, DF60THLX			
	00	Y	06001F	031001	DF60THY, DF60THLY			
	01	K1	06001F	151001	DF60TLK1			
	02	K2	06001F	251001	DF60TLK2			
	03	K3	06001F	371001	DF60TLK3			
	04	K4	06001F	421001	DF60TLK4			
	05	K5	06001F	510001	DF60TLK5			
	06	K6	06001F	680001	DF60TLK6			
	07	K7	06001F	780001	DF60TLK7			
DF70 (1298 cc) (EFI 4 cyl.)	98	W	07001F	861001	DF70TLW			
	99	X	07001F	971001	DF70TLX, DF70THLX			
	00	Y	07001F	031001	DF70TLY, DF70THLY			
	01	K1	07001F	151001	DF70TLK1			
	02	K2	07001F	251001	DF70TLK2			
	03	K3	07001F	371001	DF70TLK3			
	04	K4	07001F	421001	DF70TLK4			
	05	K5	07001F	510001	DF70TLK5			
	06	K6	07001F	680001	DF70TLK6			
	07	K7	07001F	780001	DF70TLK7			
DF70 (1502 cc EFI 4 cyl.)	08	K8	07001F	880001	DF70TLK8			
	09	K9	07002F	961001	DF70ATLK9			
	DF80 (1502 cc EFI 4 cyl.)	09	K9	08001F	961001	DF80ATLK9, DF80ATXK9		
		DF90 (1502 cc EFI 4 cyl.)	09	K9	09002F	961001	DF90ATLK9, DF80ATXK9	
			DF90 (1950 cc) (EFI, 4 cyl.)	01	K1	09001F	151001	DF90TLK1, DF90TXK1
				02	K2	09001F	251001	DF90TLK2, DF90TXK2
				03	K3	09001F	371001	DF90TLK3, DF90TXK3
				04	K4	09001F	421001	DF90TLK4, DF90TXK4
				05	K5	09001F	510001	DF90TLK5, DF90TXK5
				06	K6	09001F	680001	DF90TLK6, DF90TXK6
07				K7	09001F	780001	DF90TLK7, DF90TXK7	
08				K8	09001F	880001	DF90TLK8, DF90TXK8	
DF100 (1950 cc) (EFI, 4 cyl.)	09		K9	10001F	980001	DF100TLK9, DF100TXK9		

Model	Year	Code	Prefix	Serial #	SCI Models Distributed
DF115 (1950 cc) (EFI, 4 cyl)	01	K1	11501F	151001	DF115TLK1, DF115TXK1
	02	K2	11501F	251001	DF115TLK2, DF115TXK2
	03	K3	11501F	371001	DF115TLK3, DF115TXK3
	04	K4	11501F	421001	DF115TLK4, DF115TXK4
	05	K5	11501F	510001	DF115TLK5, DF115TXK5
	06	K6	11501F	680001	DF115TLK6, DF115TXK6
	07	K7	11501F	780001	DF115TLK7, DF115TXK7
	08	K8	11501F	880001	DF115TLK8, DF115TXK8
	09	K9	11501F	980001	DF115TLK9, DF115TXK9
DF140 (2044 cc) (EFI, 4 cyl)	02	K2	14001F	251001	DF140TLK2, DF140TXK2
	03	K3	14001F	371001	DF140TLK3, DF140TXK3 DF140TXGK3
	04	K4	14001F	421001	DF140TLK4, DF140TXK4
	04	K4	14001Z	421001	DF140TXZK4
	05	K5	14001F	510001	DF140TLK5, DF140TXK5
	05	K5	14001Z	510001	DF140TXZK5
	06	K6	14001F	680001	DF140TLK6, DF140TXK6
	06	K6	14001Z	680001	DF140TXZK6
	07	K7	14001F	780001	DF140TLK7, DF140TXK7
	07	K7	14001Z	780001	DF140TXZK7
	08	K8	14001F	880001	DF140TLK8, DF140TXK8
	08	K8	14001Z	880001	DF140TXZK8
DF150 (2867 cc) (EFI, 4 cyl)	06	K6	15001F	680001	DF150TLK6, DF150TXK6
	06	K6	15001Z	680001	DF150TXZK6
	07	K7	15001F	780001	DF150TLK7, DF150TXK7
	07	K7	15001Z	780001	DF150TXZK7
	08	K8	15001F	880001	DF150TLK8, DF150TXK8
	08	K8	15001Z	880001	DF150TXZK8
DF175 (2867 cc) (EFI, 4 cyl)	06	K6	17501F	680001	DF175TLK6, DF175TXK6
	06	K6	17501Z	680001	DF175TXZK6
	07	K7	17501F	780001	DF175TLK7, DF175TXK7
	07	K7	17501Z	780001	DF175TXZK7
DF200 (3,614 cc) (EFI, V6)	04	K4	20001F	421001	DF200TXK4
	04	K4	2000Z	421001	DF200TXZK4
	05	K5	20001F	510001	DF200TXK5
	05	K5	20001Z	510001	DF200TXZK5
DF225 (3,614 cc) (EFI, V6)	04	K4	22501F	421001	DF225TXK4
	04	K4	22501Z	421001	DF225TXZK4
	05	K5	22501F	510001	DF225TXK5,
	05	K5	22501Z	510001	DF225TXZK5
	06	K6	22501F	680001	DF225TXK6, DF225TXK6
	06	K6	22501Z	680001	DF225TXZK6, DF225TXZK6
	07	K7	22501F	780001	DF225TXK7, DF225TXK7,
	07	K7	22501Z	780001	DF225TXZK7, DF225TXZK7
	08	K8	22501F	880001	DF225TXK8, DF225TXK8
	08	K8	22501Z	880001	DF225TXZK8, DF225TXZK8
DF250 (3,614 cc) (EFI, V6)	04	K4	25001F	421001	DF250TXK4, DF250TXK4
	04	K4	25001Z	421001	DF250TXZK4, DF250TXZK4
	05	K5	25001F	510001	DF250TXK5
	05	K5	25001Z	510001	DF250TXZK5, DF250TXZK5
	06	K6	25001F	680001	DF250TXK6, DF250TXK6
	06	K6	25001Z	680001	DF250TXZK6, DF250TXZK6
	07	K7	25001F	780001	DF250TXK7, DF250TXK7
	07	K7	25001Z	780001	DF250TXZK7, DF250TXZK7
	08	K8	25001F	880001	DF250TXK8, DF250TXK8
08	K8	25001Z	880001	DF250TXZK8, DF250TXZK8	
DF250SS (4,028 cc) (EFI, V6)	08	K8	25002F	880001	DF250SSTLK8
	09	K9	25002F	871001	DF250SSTLK9
DF300 (4,028 cc) (EFI, V6)	07	K7	30001F	781001	DF300TXK7, DF300TXK7
	07	K7	30001Z	781001	DF300TXZK7, DF300TXZK7
	08	K8	30001F	881001	DF300TXK8, DF300TXK8
	08	K8	30001Z	881001	DF300TXZK8, DF300TXZK8
	09	K9	30001F	981001	DF300TXK9, DF300TXK9
	09	K9	30001Z	981001	DF300TXZK9, DF300TXZK9

Model	Year	Code	Prefix	Serial #	SCI Models Distributed
DF225 (3,614 cc) (EFI, V6)	04	K4	22501F	421001	DF225TXK4
	04	K4	22501Z	421001	DF225TXZK4
	05	K5	22501F	510001	DF225TXK5,
	05	K5	22501Z	510001	DF225TXZK5
	06	K6	22501F	680001	DF225TXK6, DF225TXK6
	06	K6	22501Z	680001	DF225TXZK6, DF225TXZK6
	07	K7	22501F	780001	DF225TXK7, DF225TXK7,
	07	K7	22501Z	780001	DF225TXZK7, DF225TXZK7
	08	K8	22501F	880001	DF225TXK8, DF225TXK8
08	K8	22501Z	880001	DF225TXZK8, DF225TXZK8	
DF250 (3,614 cc) (EFI, V6)	04	K4	25001F	421001	DF250TXK4, DF250TXK4
	04	K4	25001Z	421001	DF250TXZK4, DF250TXZK4
	05	K5	25001F	510001	DF250TXK5
	05	K5	25001Z	510001	DF250TXZK5, DF250TXZK5
	06	K6	25001F	680001	DF250TXK6, DF250TXK6
	06	K6	25001Z	680001	DF250TXZK6, DF250TXZK6
	07	K7	25001F	780001	DF250TXK7, DF250TXK7
	07	K7	25001Z	780001	DF250TXZK7, DF250TXZK7
	08	K8	25001F	880001	DF250TXK8, DF250TXK8
08	K8	25001Z	880001	DF250TXZK8, DF250TXZK8	
DF250SS (4,028 cc) (EFI, V6)	08	K8	25002F	880001	DF250SSTLK8
	09	K9	25002F	871001	DF250SSTLK9
DF300 (4,028 cc) (EFI, V6)	07	K7	30001F	781001	DF300TXK7, DF300TXK7
	07	K7	30001Z	781001	DF300TXZK7, DF300TXZK7
	08	K8	30001F	881001	DF300TXK8, DF300TXK8
	08	K8	30001Z	881001	DF300TXZK8, DF300TXZK8
	09	K9	30001F	981001	DF300TXK9, DF300TXK9
	09	K9	30001Z	981001	DF300TXZK9, DF300TXZK9

Model	Year	Code	Prefix	Serial #	SCI Models Distributed
DT2 (50 cc) (1 cyl.)	77	C	0201	C10001	
	78	D	0201	D10001	
	79	F	0201	F10001	
	80	G	0201	001001	
	81	J	0201	101001	
	82	VZ	0201	201002	
	83	QD	0201	330404	DT2D
	84	VE	0201	443413	DT2E
	85	VF	0201	542005	DT2F
	86	VG	0201	671289	DT2SG
	87	VH	0201	783131	DT2SH
	88	VJ	0201	889626	DT2SJ
	89	K	0201	901001	DT2SK
	90	L	0201	011001	DT2SL
	91	M	0201	131001	DT2SM
	92	N	0201	231001	DT2SN
93	P	0201	351001	DT2SP	
94	R	0201	461001	DT2SR	
95	S	0201	581001	DT2SS	
96	T	0201	651001	DT2ST	
DT2.2 (55 cc) (1 cyl.)	97	V	00221	751001	DT2.2SV
	98	W	00221	861001	DT2.2SW
	99	X	00221	971001	DT2.2SX
	00	Y	00221	031001	DT2.2SY
DT3.5 (70 cc) (1 cyl.)	79	F	0351	F10001	
	80	G	0351	001001	
	81	J	0351	101001	
	82	VZ	0351	201001	
	83	QD	0351	324373	DT3.5SD, DT3.5LD
84	VE	0351	432103	DT3.5SE, DT3.5SD	
DT4 (90 cc) (1 cyl.)	85	VF	00402	501001	DT4SF
	86	VG	00402	610779	DT4SG
	87	VH	00402	718001	DT4SH
	88	VJ	00402	824522	DT4SJ, DT4LJ
	89	K	00402	930693	DT4SK
	90	L	00402	011001	DT4SL
	91	M	00402	131001	DT4SM
	92	N	00402	231001	DT4SN, DT4LN
	93	P	00402	351001	DT4SP, DT4LP
	94	R	00402	461001	DT4SR, DT4LR
	95	S	00402	581001	DT4SS
	96	T	00402	651001	DT4ST, DT4LT
97	V	00402	751001	DT4SV	
98	W	00402	861001	DT4SW	
DT4.5 (70 cc) (1 cyl.)	77	C	0451	C10001	
	78	D	0451	D10001	
DT5 (110 cc) (1 cyl.)	98	W	00503	861001	DT5SX
	99	X	00503	971001	DT5SY
	00	Y	00503	031001	DT5SY

Model	Year	Code	Prefix	Serial #	SCI Models Distributed
DT5 (113 cc) (2 cyl.)	78	D	0501	D10001	
	79	F	0501	F10001	
	80	G	0501	001001	
	81	J	0501	101001	
	82	VZ	0501	201001	
	83	QD	0501	327050	DT5SD, DT5LD
DT6 (165 cc) (2 cyl.)	84	VE	00601	401001	DT6SE, DT6LE
	85	VF	00601	506819	DT6SF, DT6LF
	86	VG	00601	610001	DT6SG
	87	VH	00601	701001	DT6SH
	88	VJ	00601	817660	DT6SJ
	89	K	00601	920870	DT6SK
	90	L	00601	011001	DT6SL
	91	M	00601	131001	DT6SM
	92	N	00601	231001	DT6SN, DT6LN
	93	P	00601	351001	DT6SP, DT6LP
	94	R	00601	461001	DT6SR, DT6LR
	95	S	00601	581001	DT6SS
	96	T	00601	651001	DT6ST, DT6LT
	97	V	00601	751001	DT6SV
98	W	00601	861001	DT6SW	
99	X	00601	971001	DT6SX	
00	Y	00601	031001	DT6ST	
DT7.5 (165 cc) (2 cyl.)	77	C	0751	C10001	
	78	D	0751	D10001	
	79	F	0751	F10001	
DT8 (165 cc) (2 cyl.)	80	G	0801	001001	
	81	J	0801	101001	
	82	VZ	0801	201001	
	83	QD	0801	319254	DT8SD, DT8LD
	84	VE	0801	426126	DT8SE, DT8LE
	85	VF	0801	530711	DT8SF, DT8LF
	86	VG	0801	634102	DT8SG
	87	VH	0801	737371	DT8SH
	88	VJ	0801	840168	
	89	K	0801	942358	
	90	L	0801	011001	DT8MSL
	91	M	0801	131001	DT8MSM
	92	N	0801	231001	DT8MSN
93	P	0801	351001	DT8MSP	
94	R	0801	461001		
95	S	0801	581001		
96	T	0801	651001		
97	V	0801	751001		
DT8C (211 cc) (2 cyl.)	88	VJ	00802	801020	DT8CSJ, DT8CLJ
	89	K	00802	903537	DT8MCSK
	90	L	00802	011011	DT8MCSL, DT8MCLL
	91	M	00802	131001	DT8MCSM, DT8MCLM
	92	N	00802	231001	DT8MCSN, DT8MCLN
	93	P	00802	351001	DT8MCS P, DT8MCLP
	94	R	00802	461001	DT8MCSR, DT8MCLR
	95	S	00802	581001	DT8MCSS, DT8MCLS
	96	T	00802	651001	DT8MCST, DT8MCLT
	97	V	00802	751001	DT8MCVS, DT8MCLV

Model	Year	Code	Prefix	Serial #	SCI Models Distributed
DT9.9 (256 cc) (2 cyl.) Behind water	77	C	0991	C10001	
	78	D	0991	D10001	
	79	F	0991	F10001	
	80	G	0991	001001	
	81	J	0991	101001	
	82	VZ	0991	201001	
DT9.9P (256 cc) (2 cyl.)	80	G	0992	001001	
	81	J	0992	101001	
	82	VZ	0992	201001	
DT9.9 (284 cc) (2 cyl.)	83	QD	00993	301001	DT9.9MSD, DT9.9MLD, DT9.9ELD
	84	VE	00993	406191	DT9.9MSE, DT9.9MLE, DT9.9ESE, DT9.9ELE
	85	VF	00993	513227	DT9.9MSF, DT9.9MLF, DT9.9ESF, DT9.9ELF
	86	VG	00993	618630	DT9.9SG, DT9.9LG, DT9.9ESG, DT9.9ELG
	87	VH	00993	724656	DT9.9SH, DT9.9LH, DT9.9ESH
	88	VJ	00993	829118	
	89	K	00993	933212	DT9.9MSL, DT9.9MLL
	90	L	00993	011001	DT9.9MSL, DT9.9MLL
	91	M	00993	131001	DT9.9MSM
	92	N	00993	231001	DT9.9MSN
	93	P	00993	351001	DT9.9MSP
	94	R	00993	461001	
	95	S	00993	581001	
	96	T	00993	651001	
	97	V	00993	751001	
98	W	00993	861001		
DT9.9C (211 cc) (2 cyl.)	88	VJ	00994	801001	DT9.9MCSJ, DT9.9MCLJ, DT9.9CESJ, DT9.9CELJ, DT9.9CNXJ
	89	K	00994	906350	DT9.9MCSK, DT9.9MCLK, DT9.9CNK, DT9.9CENK
	90	L	00994	011001	DT9.9MCSL, DT9.9MCLL, DT9.9CESL, DT9.9CELL, DT9.9CNL, DT9.9CENL
	91	M	00994	131001	DT9.9MCSM, DT9.9MCLM, DT9.9CESM, DT9.9CELM
	92	N	00994	231001	DT9.9MCSN, DT9.9MCLN, DT9.9CESN, DT9.9CELN
	93	P	00994	351001	DT9.9MCSM, DT9.9MCLM, DT9.9CESM, DT9.9CELM
	94	R	00994	461001	DT9.9MCSR, DT9.9MCLR, DT9.9CESR, DT9.9CELR, DT9.9CNLR, DT9.9CNEXR
	95	S	00994	581001	DT9.9MCSS, DT9.9CESS, DT9.9CELS
	96	T	00994	651001	DT9.9MCST, DT9.9MCLT
	97	V	00994	751001	DT9.9MCSV, DT9.9MCLV

Model	Year	Code	Prefix	Serial #	SCI Models Distributed	
DT15 (284 cc) (2 cyl.)	83	QD	01501	301001	DT15MSD, DT15MLD, DT15ESD, DT15ELD	
	84	VE	01501	403841	DT15MSE, DT15MLE, DT15ESE, DT15ELE	
	85	VF	01501	508223	DT15MSF, DT15MLF, DT15ESF, DT15ELF	
	86	VG	01501	613324	DT15SG, DT15LG, DT15ESG, DT15ELG	
	87	VH	01501	718976	DT15SH, DT15LH, DT15ESH, DT15ELH	
	88	VJ	01501	822034	DT15MSJ, DT15MLJ, DT15ESJ, DT15ELJ	
	89	K	01501	927515	DT15MSK, DT15MLK	
	90	L	01501	011001	DT15MSL, DT15MLL	
	91	M	01501	131001		
	92	N	01501	231001		
	93	P	01501	351001		
	94	R	01501	461001		
	95	S	01501	581001		
	96	T	01501	651001		
	97	V	01501	751001		
	98	W	01501	861001		
	DT15C (284 cc) (2 cyl.)	89	K	01502	901013	DT15MCSK, DT15MCLK
		90	L	01502	011001	DT15MCSL, DT15MCLL, (2 DT15CESL, DT15CELL
91		M	01502	131001	DT15MCSM, DT15MCLM, DT15CESM, DT15CELM	
92		N	01502	231001	DT15MCSN, DT15MCLN, DT15CESN, DT15CELN	
93		P	01502	351001	DT15MCSM, DT15MCLM, DT15CESM, DT15CELM	
94		R	01502	461001	DT15MCSR, DT15MCLR, DT15CESR, DT15CELR	
95		S	01502	581001	DT15MCSS, DT15MCLS, DT15CELS	
96		T	01502	651001	DT15MCST, DT15MCLT, DT15CEST, DT15CELT	
97	V	01502	751001	DT15MCSV, DT15MCLV, DT15CESV, DT15CELV		
DT16 (284 cc) (2 cyl.) (Behind water)	77	C	1601	C10001		
	78	D	1601	D10001		
	79	F	1601	F10001		
	80	G	1601	001001		
	81	J	1601	101001		
	82	VZ	1601	201001		
DT16P (284 cc) (2 cyl.) (Through hub)	80	G	1602	001001		
	81	J	1602	101001		
	82	VZ	1602	201001		

Model	Year	Code	Prefix	Serial #	SCI Models Distributed
DT20 (396 cc) (2 cyl.) (Behind water)	77	C	2001	C10001	
	78	D	2001	D10001	
	79	F	2001	F10001	
	80	G	2001	001001	
DT20 (396 cc) (2 cyl.) (Through hub)	80	G	2002	001001	
	81	J	2002	101001	
	82	VZ	2002	201001	
DT20 (444 cc) (2 cyl.)	87	VH	02003	704548	DT20SH, DT20LH
	88	VJ	02003	805874	DT20MSJ, DT20MLJ, DT20ESJ, DT20ELJ
	89	K	02003	907250	
	90	L	02003	011001	DT20MSL, DT20MLL
	91	M	02003	131001	DT20MSM, DT20MLM
	92	N	02003	231001	DT20MSN, DT20MLN
DT20 (499 cc) (2 cyl.)	93	P	02003	351001	DT20MSP, DT20MLP
	94	R	02004	461001	
	95	S	02004	581001	
	96	T	02004	651001	
DT25 (447 cc) (2 cyl.) (Behind water)	77	C	2501	C10001	
	78	D	2501	D10001	
	79	F	2501	F10001	
DT25P (447 cc) (2 cyl.) (Through hub)	80	G	2501	001001	
	81	J	2501	101001	
	82	VZ	2501	201001	
	DT25 (499 cc) (2 cyl.)	80	G	2502	001001
81		J	2502	101001	
82		VZ	2502	201001	
83		QD	02503	301001	DT25SD, DT25LD
84		VE	02503	402453	DT25MSE, DT25MLE
85		VF	02503	507355	DT25MSF, DT25MLF
86		VG	02503	610947	DT25SG, DT25LG
87		VH	02503	704548	DT25SH, DT25LH
88		VJ	02503	805874	DT25MSJ, DT25MLJ, DT25ESJ, D25ELJ
89		K	02503	907250	
90		L	02503	011001	DT25MSL, DT25MLL
91		M	02503	131001	DT25MSM
92		N	02503	231001	DT25MSN
93		P	02503	351001	DT25MSP, DT25MLP
94		R	02503	461001	
95		S	02503	581001	
96		T	02503	651001	
97		V	02503	751001	
98	W	02503	861001		

Model	Year	Code	Prefix	Serial #	SCI Models Distributed
DT25C (543 cc) (3 cyl.)	89	K	02507	901005	DT25MCSK, DT25MCLK, DT25CESK, DT25CELK
	90	L	02507	011001	DT25MCSL, DT25MCLL, DT25CESL, DT25CELL
	91	M	02507	131001	DT25MCSM, DT25MCLM, DT25CESM, DT25CELM
	92	N	02507	231001	DT25MCSN, DT25MCLN, DT25CESN, DT25CELN
	93	P	02507	351001	DT25MCS P, DT25MCLP, DT25CESP, DT25CELP, DT25CRSP, DT25CRLP
	94	R	02507	461001	DT25MCSR, DT25MCLR, DT25CESR, DT25CELR, DT25CRSR, DT25CRLR
	95	S	02507	581001	DT25MCSS, DT25MCLS, DT25CELS
	96	T	02507	651001	DT25MCST, DT25MCLT, DT25CEST, DT25CELT, DT25CRST, DT25CRLT
	97	V	02507	751001	DT25MCSP, DT25MCLV, DT25CESV, DT25CELV, DT25CRSV, DT25CRLV
	98	W	02507	861001	DT25MCSW, DT25MCLW, DT25CESW, DT25CELW
	99	X	02507	971001	DT25MCSX, DT25MCLX
DT30 (499 cc) (2 cyl.)	83	QD	03001	301001	DT30MSD, DT30MLD, DT30ESD, DT30ELD
	84	VE	03001	408067	DT30ESE, DT30ELE
	85	VF	03001	511087	DT30RSG, DT30RLG
	86	VG	03001	614522	DT30RSH, DT30RLH
	87	VH	03001	703025	
	88	VJ	03001	803087	
	89	K	03001	924162	
	90	L	03001	011001	
	91	M	03001	131001	
	92	N	03001	231001	
	93	P	03001	351001	
94	R	03001	461001		
95	S	03001	581001		
96	T	03001	651001		
97	V	03001	751001		
98	W	03001	861001		
99	X	03001	971001		
00	Y	03001	031001	DT30MWLY	

Model	Year	Code	Prefix	Serial #	SCI Models Distributed
DT30C (543 cc) (3 cyl.)	88	VJ	03003	801001	DT30MCSJ, DT30MCLJ, DT30CRSJ, DT30CRLJ
	89	K	03003	904770	DT30MCSK, DT30MVLK, DT30CRSK, DT30CRLK
	90	L	03003	011001	DT30MCSL, DT30MCLL, DT30CRSL, DT30CRL
	91	M	03003	131001	DT30MCSM, DT30MCLM, DT30CRSM, DT30CRLM
	92	N	03003	231001	DT30MCSN, DT30MCLN, DT30CRSN, DT30CRLN
	93	P	03003	351001	DT30MCSM, DT30MCLM, DT30CRSM, DT30CRLM
	94	R	03003	461001	DT30MCSR, DT30MCLR, DT30CRSR, DT30CRLR
	95	S	03003	581001	DT30MCSS, DT30MCLS, DT30CRSS, DT30CRLS
	96	T	03003	651001	DT30MCST, DT30MCLT, DT30CRST, DT30CRLT
	97	V	03003	751001	DT30MCSV, DT30MCLV, DT30CRSV, DT30CRLV
98	W	03003	861001	DT30MCSW, DT30MCLW, DT30CRSW, DT30CRLW	
99	X	03003	971001	DT30MCSX, DT30MCLX,	
DT40 (617 cc) (2 cyl.)	80	G	4001	001001	DT40MSD, DT40MLD, DT40ESD, DT40ELD
	81	J	4001	101001	
	82	VZ	4001	201001	
	83	QD	4001	300001	
	84	VE	4001	422241	
	85	VF	4001	524228	
	86	VG	4001	626376	
87	VH	4001	729234		
DT40W (696 cc) (2 cyl.)	88	VJ	04003	820016	DT40MMLX
	89	K	04003	923925	
	90	L	04003	011001	
	91	M	04003	131001	
	92	N	04003	231001	
	93	P	04003	351001	
	94	R	04003	461001	
	95	S	04003	581001	
	96	T	04003	651001	
	97	V	04003	751001	
98	W	04003	861001		
99	X	04003	971001		
00	Y	04003	031001		

Model	Year	Code	Prefix	Serial #	SCI Models Distributed	
DT40C (696 cc) (2 cyl.)	84	VE	04003	401001	DT40MCSE, DT40MCLE, DT40ECSE, DT40ECSL	
	85	VF	04003	503897	DT40MCSF, DT40MCLF, DT40CESF, DT40CELF	
	86	VG	04003	608513	DT40MCSG, DT40MCLG, DT40CRSG, DT40CRLG, DT40TCSG, DT40TCLG	
	87	VH	04003	714001	DT40MCSH, DT40MCLH, DT40CRSH, DT40CRLH, DT40TCLH	
	88	VJ	04003	820016	DT40MCSJ, DT40MCLJ, DT40CRLJ, DT40TCLJ	
	89	K	04003	923925	DT40MCSK, DT40MCLK, DT40CRLK, DT40TCLK	
	90	L	04003	011001	DT40MCSL, DT40MCLL, DT40CRL, DT40TCLL	
	91	M	04003	131001	DT40MCSM, DT40MCLM, DT40CRLM, DT40TCLM	
	92	N	04003	231001	DT40MCSN, DT40MCLN, DT40CRLN, DT40TCLN	
	93	P	04003	351001	DT40MCSM, DT40MCLM, DT40CRLM, DT40TCLM	
	94	R	04003	461001	DT40MCSR, DT40MCLR, DT40CRLR, DT40TCLR	
	95	S	04003	581001	DT40MCSS, DT40MCLS, DT40CRLS, DT40TCLS	
	96	T	04003	651001	DT40MCST, DT40MCLT, DT40CRLT, DT40TCLT	
	97	V	04003	751001	DT40MCSV, DT40MCLV, DT40CRLV, DT40TCLV	
	98	W	04003	861001	DT40MCSW, DT40MCLW, DT40CRLW, DT40TCLW	
	DT50 (723 cc) (2 cyl.)	77	C	5001	C10001	DT50ELD, DT50MLD
		78	D	5001	D10001	
		79	F	5001	F10001	
80		G	5001	001001		
81		J	5001	101001		
82		VZ	5001	201001		
83	QD	5001	300001			
DT50M (798 cc) (2 cyl.)	80	G	5002	001001		
	81	J	5002	101001		
	82	VZ	5002	201001		
DT50C (798 cc) (2 cyl.)	84	VE	05003	401001	DT50TCLE	
DT55M (798 cc) (2 cyl.)	85	VF	05502	501001	DT55MLF	
	86	VG	05502	601167	DT55MLG	
	87	VH	05502	702147	DT55MLH	
	88	VJ	05502	802731	DT55MLJ	
	89	K	05502	903680	DT55MLK	
	90	L	05502	011001	DT55MLL	
	91	M	05502	131001		

Model	Year	Code	Prefix	Serial #	SCI Models Distributed
DT55C (891 cc) (3 cyl.)	85	VF	05501	501001	DT55TCLF
	86	VG	05501	603046	DT55TCLG
	87	VH	05501	705120	DT55TCLH, DT55HTCLH
	88	VJ	05501	807478	DT55TCLJ, DT55HTCLJ
	89	K	05501	909570	DT55TCLK, DT55HTCLK
	90	L	05501	011001	DT55TCLL, DT55HTCLL
	91	M	05501	131001	DT55TCLM
	92	N	05501	231001	DT55TCLN
	93	P	05501	351001	DT55TCLP
	94	R	05501	461001	DT55TCLR
	95	S	05501	581001	DT55TCLS
	96	T	05501	651001	DT55TCLT
	97	V	05501	751001	DT55TCLV
98	W	05501	861001	DT55TCLW	
DT60C (798 cc) (2 cyl.)	83	QD	06001	301001	DT60CLD
	84	VE	06001	404001	DT60TCLE
DT65 (798 cc) (2 cyl.)	78	D	6501	D10001	
	79	F	6501	F10001	
	80	G	6501	010001	
	81	J	6501	101001	
	82	VZ	6501	201001	
83	QD	6501	301001		
DT65C (891 cc) (3 cyl.)	85	VF	06502	501001	DT65TCLF
	86	VG	06502	603134	DT65TCLG
	87	VH	06502	705017	DT65TCLH
	88	VJ	06502	807173	DT65TCLJ
	89	K	06502	908928	DT65TCLK, DT65HTCLK
	90	L	06502	011001	DT65TCLL
	91	M	06502	131001	DT65TCLM
	92	N	06502	231001	DT65TCLN
	93	P	06502	351001	DT65TCLP
	94	R	06502	461001	DT65TCLR
	95	S	06502	581001	DT65TCLS
	96	T	06502	651001	DT65TCLT
	97	V	06502	751001	DT65TCLV
98	W	06502	861001	DT65TCLW	
DT75C (1197 cc) (3 cyl.)	83	QD	07501	301001	DT75TCLD
	84	VE	07501	402347	DT75TCLE
	85	VF	07501	504034	DT75TCLF
	86	VG	07501	606014	DT75TCLG
	87	VH	07501	707497	DT75TCLH
	88	VJ	07501	801001	DT75TCLJ
	89	K	07501	912143	DT75TCLK
	90	L	07501	011001	DT75TCLL
	91	M	07501	131001	DT75TCLM
	92	N	07501	231001	DT75TCLN
	93	P	07501	351001	DT75TCLP
	94	R	07501	461001	DT75TCLR
	95	S	07501	581001	DT75TCLS
96	T	07501	651001	DT75TCLT	
97	V	07501	751001	DT75TCLV	
98	W	07501	861001	DT75TCLW	

Model	Year	Code	Prefix	Serial #	SCI Models Distributed
DT85C (1197 cc) (3 cyl.)	79	F	8501	F10001	
	80	G	8501	001001	
	81	J	8501	101001	
	82	VZ	8501	201001	
	83	QD	8501	308123	DT85TCLD
	84	VE	8501	410444	DT85TCLE
	85	VF	8501	512463	DT85TCLF
	86	VG	8501	614766	DT85TCLG
	87	VH	8501	716501	DT85TCLH
	88	VJ	8501	801001	DT85TCLJ
	89	K	8501	920640	DT85TCLK
	90	L	8501	011001	DT85TCLL
	91	M	8501	131001	DT85TCLM
	92	N	8501	231001	DT85TCLN
	93	P	8501	351001	DT85TCLP
	94	R	8501	461001	DT85TCLR
	95	S	8501	581001	DT85TCLS
	96	T	8501	651001	DT85TCLT
	97	V	8501	751001	DT85TCLV
98	W	8501	861001	DT85TCLW	
99	X	8501	971001	DT85TCLX	
00	Y	8501	031001	DT85TCLY	
DT100C (1419 cc) (V4)	90	L	10001	011001	DT100TCLL
	91	M	10001	131001	DT100TCLM
	92	N	10001	231001	DT100TCLN
	93	P	10001	351001	DT100TCLP
	94	R	10001	461001	DT100TCLR
	95	S	10001	581001	DT100TCLS
	96	T	10001	651001	DT100TCLT
	97	V	10001	751001	DT100TCLV
	98	W	10001	861001	DT100TCLW
	99	X	10001	971001	DT100TCLX
DT115C (1773 cc) (4 cyl.)	81	J	11501	101001	
	82	VZ	11501	201001	
	83	QD	11502	303166	DT115TCLD
	84	VE	11502	404575	DT115TCLE
	85	VF	11502	506281	DT115TCLF
	86	VG	11502	607706	DT115TCLG
	87	VH	11502	709019	DT115TCLH
	88	VJ	11502	811083	DT115TCLJ
	89	K	11502	912900	DT115TCLK
	90	L	11502	011001	DT115TCLL
	91	M	11502	131001	DT115TCLM
	92	N	11502	231001	DT115TCLN
	93	P	11502	351001	DT115TCLP
	94	R	11502	461001	DT115TCLR
95	S	11502	581001	DT115TCLS	
96	T	11502	651001	DT115TCLT	
97	V	11502	751001		
98	W	11502	861001		
DT115SC (1773 cc) (EFI 4 cyl.)	97	V	11503	751001	DT115STCLV
	98	W	11503	861001	DT115STCLW
	99	X	11503	971001	DT115STCLX
	00	Y	11503	031001	DT115STCLY

Model	Year	Code	Prefix	Serial #	SCI Models Distributed
DT140 (1773 cc) (4 cyl.)	81	J	14001	101001	
	82	VZ	14001	201001	
	83	QD	14002	300001	DT140TCLD
	84	VE	14002	405082	DT140TCLE
	85	VF	14002	506621	DT140TCLF
	86	VG	14002	608049	DT140TCLG
	87	VH	14002	709261	DT140TCLH
	88	VJ	14002	810785	DT140TCLJ
	89	K	14002	912231	DT140TCLK
	90	L	14002	011001	DT140TCLL
	91	M	14002	131001	DT140TCLM
	92	N	14002	231001	DT140TCLN
	93	P	14002	351001	DT140TCLP
	94	R	14002	461001	DT140TCLR
	95	S	14002	581001	DT140TCLS
	96	T	14002	651001	DT140TCLT
DT140 (1773 cc) (EFI 4 cyl.)	97	V	14003	751001	DT140TCLV
	98	W	14003	861001	DT140TCLW, DT140TCXW
	99	X	14003	971001	DT140TCLX
	00	Y	14003	031001	DT140TCLY, DT140TCXY
DT150 (2693 cc) (V6)	86	VG	15001	601001	DT150TCLG, DT150TCXG
	87	VH	15001	702906	DT150TCLH, DT150TCXH, DT150SSH
	88	VJ	15001	804252	DT150TCLJ, DT150TCXJ, DT150SSJ
	89	K	15001	905904	DT150TCLK, DT150TCXK, DT150SSK
	90	L	15001	011001	DT150TCLL, DT150TCXL, DT150SSL
	91	M	15001	131001	DT150TCLM, DT150TCXM
	92	N	15001	231001	DT150TCLN, DT150TCXN, DT150SSN
	93	P	15001	351001	DT150TCLP, DT150TCXP
	94	R	15001	461001	
	DT150 (2693 cc) (EFI V6)	95	S	15003	581001
96		T	15003	651001	DT150TCLT, DT150TCXT
97		V	15003	751001	DT150TCLV, DT150TCXV
98		W	15003	861001	DT150TCLW, DT150TCXW
99		X	15003	971001	DT150TCLX, DT150TCXX
00		Y	15003	031001	DT150TCXY
DT150S (2693 cc) (EFI V6)	93	P	15002	351001	DT150STCLP
	94	R	15002	461001	DT150STCLR
	95	S	15002	581001	DT150STCLS
	96	T	15002	651001	DT150STCLT
	97	V	15002	751001	DT150STCLV
	98	W	15002	861001	
	99	X	15002	971001	
	00	Y	15002	031001	DT150STCLY

Model	Year	Code	Prefix	Serial #	SCI Models Distributed	
DT175 (2693 cc) (V6)	87	VH	17501	701001	DT175TCLH, DT175TCXH	
	88	VJ	17501	801449	DT175TCLJ, DT175TCXJ	
	89	K	17501	901868		
	90	L	17501	011001		
	91	M	17501	131001		
	92	N	17501	231001		
	92	P	17501	231001		
DT200 (2693 cc) (V6)	86	VG	20001	601001	DT200TCLG, DT200TCXG	
	87	VH	20001	704009	DT200TCLH, DT200TCXH	
	88	VJ	20001	805328	DT200TCLJ, DT200TCXJ, DT200VLJ	
	89	K	20001	905904	DT200TCLK, DT200TCXK, DT200VLK	
	90	L	20001	011001	DT200TCLL, DT200TCXL, DT200VLL, DT200VXL	
	91	M	20001	131001	DT200TCLM, DT200TCXM, DT200VLM, DT200VXM	
	92	N	20001	231001	DT200TCLN, DT200TCXN	
	93	P	20001	351001	DT200TCLP, DT200TCXP	
	DT200 (2693 cc) (EFI V6)	94	R	20002	461001	DT200TCLR, DT200TCXR
		95	S	20002	581001	DT200TCLS, DT200TCXS
96		T	20002	651001	DT200TCLT, DT200TCXT	
97		V	20002	751001	DT200TCLV, DT200TCXV	
98		W	20002	861001	DT200TCLW, DT200TCXW	
99		X	20002	971001	DT200TCLX, DT200TCXX	
00		Y	20002	031001	DT200TCLY, DT200TCXY	
DT225 (2693 cc) (EFI V6)		91	M	22501	131001	DT225TCLM, DT225TCXM
		92	N	22501	231001	DT225TCLN, DT225TCXN
		93	P	22501	351001	DT225TCLP, DT225TCXP
	94	R	22501	461001	DT225TCLR, DT225TCXR	
	95	S	22501	581001	DT225TCLS, DT225TCXS	
	96	T	22501	651001	DT225TCLT, DT225TCXT	
	97	V	22501	751001	DT225TCLV, DT225TCXV	
	98	W	22501	861001	DT225TCXW	
	99	X	22501	971001	DT225TCLX, DT225TCXS	
	00	Y	22501	031001	DT225TCXY	